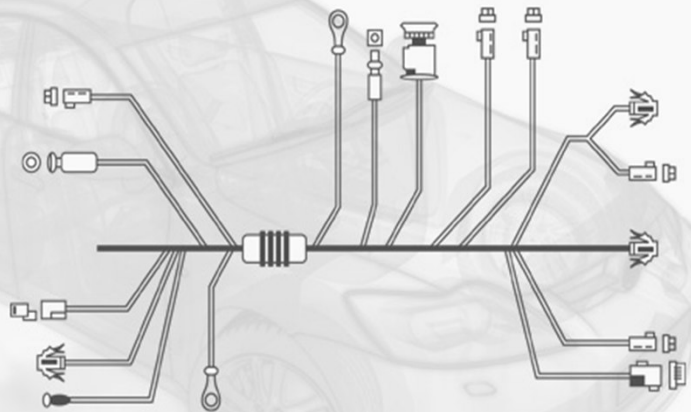
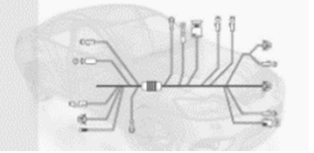


WCD – Wireless Clip Detection Product Catalogue

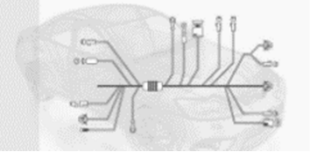


www.semd.de



Content

1.	Clipswitch	
1.1	Clipswitch T-Series	p.3
1.2	Clipswitch CS-Series	p.4
1.3	Clipswitch – CS41	p.5
2.	Clipswitch Modification	p.6
3.	Stands and Glue Adapter	p.7
4.	Accessories	
4.1	WK Accessories & Attachments	p.8
4.2	Accessories for Clipswitches for Wavestands	p.9
5.	Receiver and Accessories	p.10
6.	Spare Parts and Equipment	p.11
7.	Toplays	
7.1	FAKRA Antenna Toplays	p.12
7.2	Components for FAKRA Antenna Toplays	p.13
7.3	Toplay Accessories	p.14
8.	General Information	p.15/16



Clipswitch T-Series

General Information

Clipswitches are self-powered radio frequency transmitters. The shapes and size of the devices are designed to fit for any application in multiple ways. Each housing provides connection points for screws to fix Toplays (Clip Holder). Except for the CS41-Type the layout of the connection points is equal. This allows the usage of clip holders on different housing types.

The switches have mounted connections for wave and pipe stands as well as an option for surface mounting.

The list below shares an overview about the possible connections:

- T2.2/T3 via Wave Stand
- CS22/CS31/CS41 via Pipe Stand
- CS32 extendable with adapters for wave or pipe stands
- CS33 for table mounting
- All Switches can be modified with a glue adapter to fit on a wave or pipe stand (see page 6)

Each Switch type (CS41 excluded) can be ordered with an additional SP or ESP element. For more information please see page 15.

Technical Information

The pusher can lift a max. weight of 20g. Do not attach additional extensions on the pusher exceeding this value.

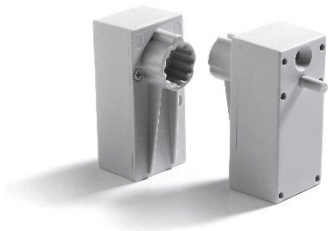
Operation Rate: max. 5 actuations per second

Transmission Range: 30m (Free Field)*

*the transmission range can be limited due the close environment.

Switch Cycles: min. 150.000

Material: PA6GK30



T2.2 (Type 2.2)

Item No.

T2.2

20400

868 MHz Clipswitch for WK (wave stand)
Dimension 26x53x40mm

T2.2 SP

20402

868 MHz Clipswitch for WK (wave stand)
Dimension 26x53x40mm

T2.2 ESP

20401

868 MHz Clipswitch for WK (wave stand)
Dimension 26x53x47mm

T3 (Type 3)

Item No.

T3

20300

868 MHz Clipswitch for WK (wave stand)
Dimension 23,7x32x36,7mm

T3 SP

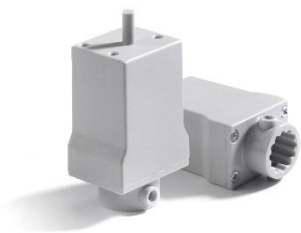
20304

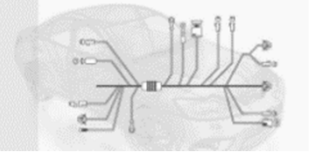
868 MHz Clipswitch for WK (wave stand)
Dimension 23,7x32x63,7mm

T3 ESP

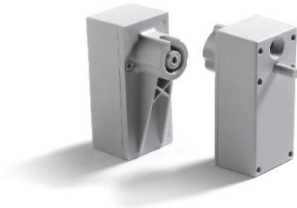
20303

868 MHz Clipswitch for WK (wave stand)
Dimension 23,7x32x70,7mm





Clipswitch CS-Series



CS22

Item No.

CS22 - 868 MHz Clipswitch for pipe stand
Dimension 26x46x56mm

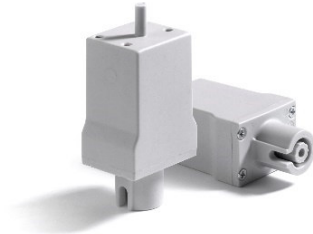
20450

CS22 SP - 868 MHz Clipswitch for pipe stand
Dimension 26x46x56mm

20452

CS22 ESP - 868 MHz Clipswitch for pipe stand
Dimension 26x46x63mm

20451



CS31

Item No.

CS31 - 868 MHz Clipswitch for pipe stand
Dimension 32x24x69mm

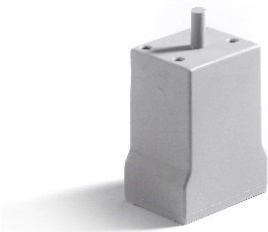
20455

CS31 SP - 868 MHz Clipswitch for pipe stand
Dimension 32x24x69mm

20457

CS31 ESP - 868 MHz Clipswitch for pipe stand
Dimension 32x24x76mm

20456



CS32

Item No.

CS32 - 868 MHz Clipswitch
without mounting part
Dimension 32x24x54mm

20460

CS32 SP - 868 MHz Clipswitch
without mounting part
Dimension 32x24x54mm

20462

CS32 ESP - 868 MHz Clipswitch
without mounting part
Dimension 32x24x61mm

20461



CS33

Item No.

CS33 - 868 MHz Clipswitch
for table mounting
Dimension 52x24x54mm

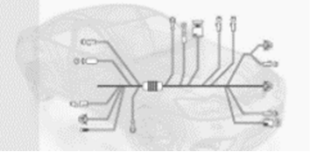
20465

CS33 SP - 868 MHz Clipswitch
for table mounting
Dimension 52x24x54mm

20467

CS33 ESP - 868 MHz Clipswitch
for table mounting
Dimension 52x24x61mm

20466



Clipswitch – CS41

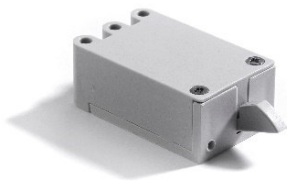
General Information

The CS41 is the smallest device regarding to a solid housing and a stable functionality. Instead of the pushing mechanism a lever mechanism is installed in this device. This opens the possibility to test certain clips in a better way.

The CS41 needs else a glue adapter or one of the adapters listed below which can be simply fixed with screws to be mounted on a socket. The CS41 can be ordered with a Ceramic Lever for less abrasion. More details see page 15.

Technical Information

See page 3.



CS41

CS41 – 868 MHz Clipswitch
Dimension 17x26x55mm

Item No.

20440

CS41 CP – 868 MHz Clipswitch
Dimension 17x26x55mm

20441



CSA41-90

CSA41-90 Stand Adapter 90°
for pipe stand

Item No.

20447



CSA41-0

CSA41-0 Stand Adapter 0°
for pipe stand

Item No.

20444

Fixing Screws and Nuts

Screw for CSA41 Stand Adapter
DIN 912 M3x22

Item No.

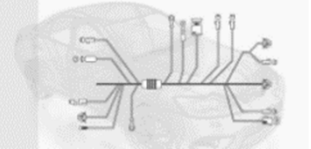
22157

Nut for CSA41 Stand Adapter
ISO 4032 M3

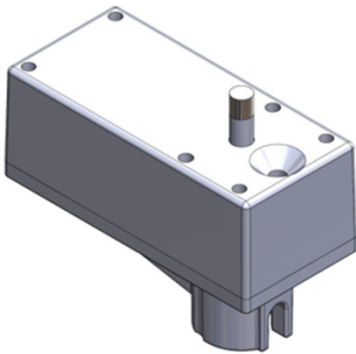
22158

Toplay Screw for CS41
DIN 7981 ST 2,9x9,5 F-H

22150



Clipswitch Modification



Steel Pusher (SP)

SP Modification Available for T2.2, T3, CS22, CS31, CS32, CS33

Attachment for Clipswitches to be more resistant against metal and sharp clips.

Increases the service life time due less abrasion.

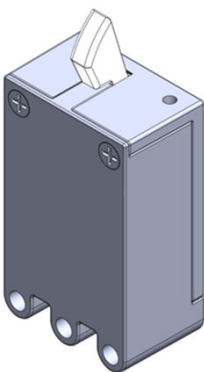
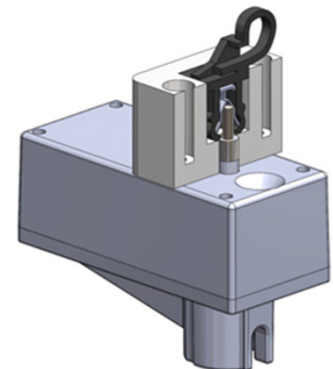
Switching points will remain the same.

Edge-clip Steel Pusher (ESP)

ESP Modification Available for T2.2, T3, CS22, CS31, CS32, CS33

Attachment for Clipswitches for detecting inner (metal) parts of clips especially for edge-clips. Increases the service life time due less abrasion.

The pusher is 7mm longer than the regular pusher with a diameter of 2mm on top.



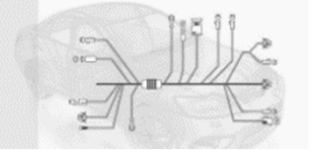
Ceramic Pusher (CP)

CP Modification available for CS41

Attachment to be more resistant against metal and sharp clips.

Increases the service life time due less abrasion.

Switching points will remain the same.



Stands and Glue Adapter



Wave Stand

Item No.

Wave Stand small

20162

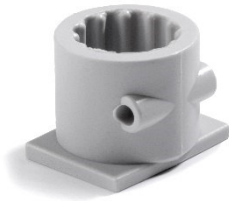
for WK-Connectors (T-Series)

Length: 108mm

Wave Stand for WK-Connectors (T-Series)

20161

Length: 130mm



WK Glue Adapter

Item No.

TA21 Glue Adapter

20429

for wave stand



Pipe Stand

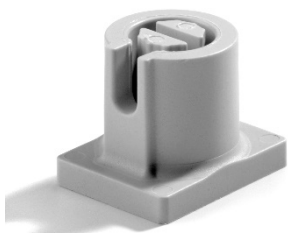
Item No.

Pipe Stand for CS-Connectors (CS-Series)

20240

Length 150mm

Diameter 8mm/10mm



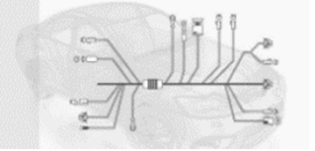
CS Glue Adapter

Item No.

CSA21 Glue adapter

20432

for pipe stand



WK Accessories & Attachments



Inverse Stand

Item No.

Inverse Stand

20205

Length 60mm



WK10 Adapter

Item No.

Adapter WK10

20179

Diameter 10mm



Flex Set

Item No.

Flexible Stand Set FL1 Set

20163

5 pieces (2 WK Male Connectors, 1 WK Female Center Connector, 2 Extension Parts)



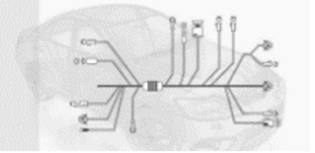
Tension Fork

Item No.

Tension Fork

20177

Diameter 20mm



Accessories for Clipswitches for Wavestands



Forks

Item No.

Fork small

20171

Opening width 13mm

Fork middle

20173

Opening width 21mm

Fork big

20175

Opening width 32mm



Brackets

Item No.

Bracket small

20165

30x30x20mm

Bracket middle

20167

60x40x30mm

Bracket big

20169

80x60x40mm



Stand Extension

Item No.

Stand Extension

20203

Length 50mm



Joint

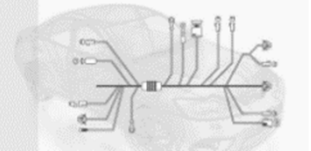
Item No.

Joint 1 90°

20201

mounted

Adjustable to 0°, 45°, 90°



Receiver and Accessories

General Information

The receiver sends any received information to a PC via UART (RS232 Connection). Only the number of possible 32-Bit IDs limits the amount of switches which can be used with one receiver.

TRB20 (20220) is designed to listen in a wide area.

TRB21 (20221) has a very short receiving area (20 - 50cm) and is especially designed for teaching in SEMD Transmitters. Contact us for more information.

Technical Information

Connection Details: Baudrate: 57600, Databits: 8, Startbits: 1, Stopbits: 1, Parity: None

Power and Consumption: 24V DC (18 -36V DC) max. 200mA

Data Interfaces: RS232 / RS485



Receiver

Item No.

TRB20

20220

Operating Frequency: 868MHz

Interface: RS-232/RS-485

TRB21

20221

Operating Frequency: 868MHz

Interface: RS-232/RS-485

Accessories

Item No.

Power Supply

20199

for Receiver TRB20/TRB21

24V, 200mA

Serial cable

20218

RS232 cable for TRB <-> PC Connection

Cable Length: 4,5m

PCI Bus Serial Card

119001

Computer Extension PCI Card

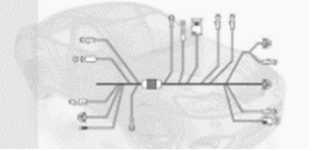
2x RS-232

PCI-E Serial Card

119004

Computer Extension PCI-Express Card

2x RS-232



Spare Parts and Equipment

Spare Parts T2.2, CS22 Item No.

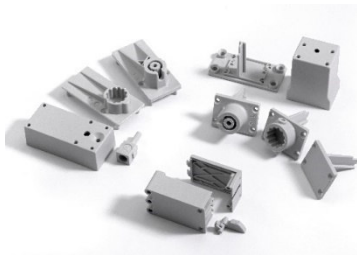
Housing Hood (for T2.2, CS22) 20422

T2.2 Housing Cover for Wave Stand 20421

CS22 Housing Cover for Pipe Stand 20430

Pusher (for T2.2, CS22) 20425

Compressing Spring (for T2.2, CS22) 20186



Spare Parts T3, CS31, CS32, CS33 Item No.

Housing Hood (for T3, CS31, CS32, CS33) 20327

T3 Housing Cover for Wave Stand 20324

CS31 Housing Cover for Pipe Stand 20431

CS32 Housing Cover without mounting part 20323

CS33 Housing Cover for table mounting 20322

Compressing Spring (for T3, CS31, CS32, CS33) 20325



Spare Parts CS41 Item No.

CS41 Housing Hood 20438

CS41 Housing Cover 20437

CS41 Pusher 20436

CS41 Compressing Spring 20439

Equipment Item No.

Super Glue 3g 2220401

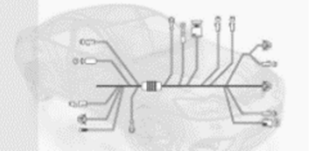
Super Glue 20g 2220402

Screw Spax —S—countersunk 3,0x20-Z 22154

CS Screw for Pipe Stand DIN 7504 N3,5x13 H 22159

Toplay Screw for CS41 DIN 7981 ST 2,9x9,5 F-H 22150

Toplay Screw for T2.2, T3, CS22, CS31, CS32,
CS33 DIN 7981 ST 2,9x13,0 F-H 22153



FAKRA Antenna Toplays

General Information

The „FAKRA Antenna Toplay Set“ contains the Basic Toplay Housing, an encoding, an *Universal Hook* and four screws for fixing the *Universal Hook*. The height of the lock can be adjusted to fit for straight or right angled connectors. All parts can be purchased as single item (Screws can only be purchased as PU). Coloring and Encoding Letters matching Rosenbergers



FAKRA Antenna Toplay Set

Pcs/Set

PU

Components not mounted

Basic FAKRA element

1

1

Encoding element

1

1

Universal Hook (coloured)

1

1

Screws DIN 913 45H M4x4*

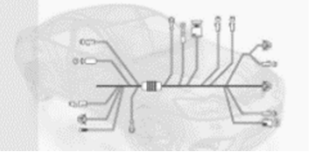
*

100

Available Sets:

Encoding	Color	Item No.
A	Black	205202
B	White/Natural	205201
C	Blue	205208
D	Bordeaux	205209
E	Green	205206
F	Brown	205203
G	Grey	205204
H	Violet	205210
I	Beige	205214
K	Curry	205213
L	Carmin Red	205211
M	Pastelorange	205212
N	Pastelgreen	205205
Z	Waterblue	205207





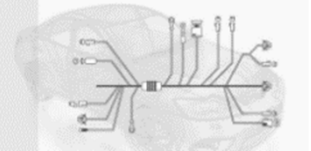
Components for FAKRA Antenna Toplays



FAKRA Topplay Body	Item No.
Matching Shape for Single FAKRA Connectors	205001
Material: POM	



Encoding	Item No.
B	205301
A	205302
F	205303
G	205304
N	205305
E	205306
Z	205307
C	205308
D	205309
H	205310
L	205311
M	205312
K	205313
I	205314



Toplay Accessories

Universal Hook

The universal hook can be used as lock in various Toplays. Locks are available in colours listed below. Furthermore the locks height can be adjusted with four screws. Material and manufacturing allows us to offer a solid, flexible and cheap product. You can request the design shape for your own Toplays via: mail@semd.de



Available Colors

Item No.

White/Natural 205101

Black 205102

Brown 205103

Grey 205104

Pastel Green 205105

Green 205106

Waterblue 205107

Blue 205108

Bordeaux 205109

Violet 205110

Carmine Red 205111

Pastel Orange 205112

Curry 205113

Beige 205114

Screws for Universal Hook Item No.

Screws DIN 913 45H M4x4 205100

Height Adjustment screws

Ceramic Sleeves

Additional element for Toplays to fixing fir tree and arrowhead clips



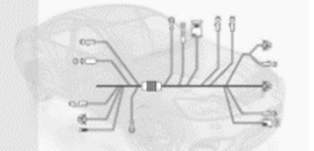
Available Diameters:

Item No.

Ø 6mm (inner diameter) 20245

Ø 7mm (inner diameter) 20246

Ø 8mm (inner diameter) 20247



General Information

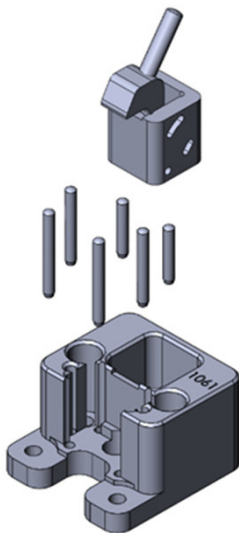
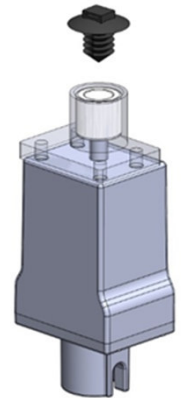
Toplay (Top Layout Equipment)

The switch design and the toplay design is both important for cliptesting with our system. Therefore we make our designs to fit on both housing types or especially for the application. Due long experience we improved the design with our customers to match the requirements in real production processes.

We are offering:

- Various versions for commonly used clips and connectors
- Attachments for external Designs
- Manufacturing
- Conception and Design for every part
- Support and Consulting

We provide finished designs and special attachments for toplays which can be used on own designs.

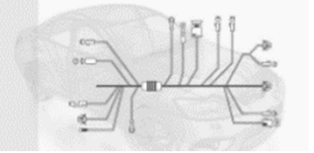


Toplay Design Service

With our long experience we combine approved technology with steady changing requirements. We realize individual designs in arrangement with your process engineers to match the exact requirements for your clips and production process. Due In-House Manufacturing we can provide fast prototyping and fast results in design.

- Individual Design
- Combining approved technology with new requirements
- Consulting
- Fast prototyping
- Including transfer of all data
- Years of experience and Know-How

If you have any questions or request send it to: mail@semd.de



General Information

Purchase Information

Prices listed without taxes and fees

Average delivery time: 3-4 weeks, Quantities above 1000 pcs on request

Shipping: ICC Incoterms 2015: EXW

More Questions? Contact us:

If you have any questions do not hesitate to contact us:

E-Mail: office@semd.de

Phone: +49 9302 989 99 90

Fax: +49 9302 989 99 98

Do you want a quotation or order parts?

Please send an E-Mail to: mail@semd.de